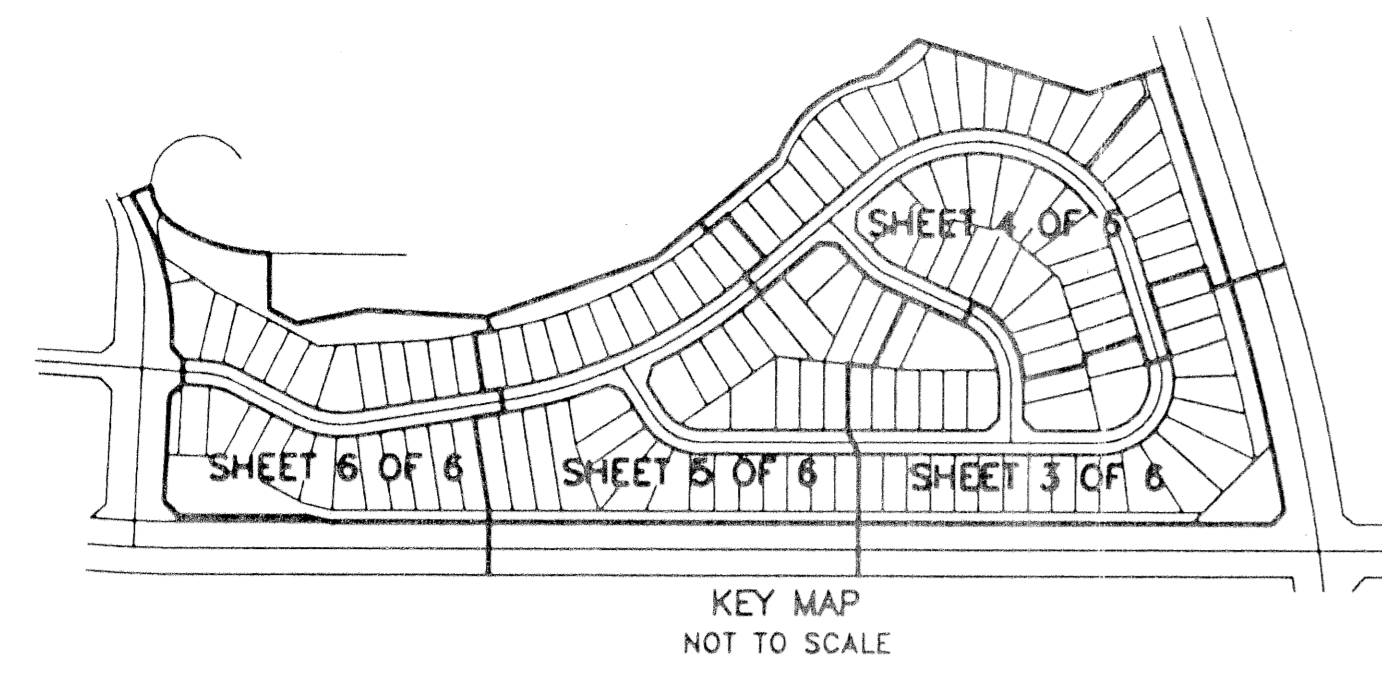


ABERDEEN - PLAT NO. 26

A PORTION OF A PLANNED UNIT DEVELOPMENT
 LYING IN SECTIONS 15 AND 16, TOWNSHIP 45 SOUTH, RANGE 42 EAST
 BEING A REPLAT OF A PORTION OF ABERDEEN - PLAT NO. 2 AS RECORDED IN PLAT
 BOOK 55, PAGES 11 THRU 22, PUBLIC RECORDS OF PALM BEACH COUNTY, FLORIDA
 SHEET 4 OF 6
 MAY, 1996

0270-030

5



ABERDEEN
N 807488.009
E 933764.534
FND. PBCO CONC. MON

CIBA
N 803977.955
E 935030.827
FND. PBCO CONC. MON

FOUND P.R.M. NO.3978 AT P.C.
 PER ABERDEEN - PLAT NO. 2
 (PLAT BOOK 55, PAGES 11-22)

GOLF COURSE TRACT "I"
 ABERDEEN - PLAT NO. 2
 (PLAT BOOK 55, PAGES 11 - 22)

STATE OF FLORIDA
 COUNTY OF PALM BEACH
 This Plat was filed for record at _____
 M. This day of _____, 19____
 and duly recorded in Plat Book No. _____
 on Page _____
 Dorothy H. Wilken, Clerk of the Circuit Court
 By _____ D.C.

